

OLD MANCHU  
JEWELRY AND  
CARVED STONES

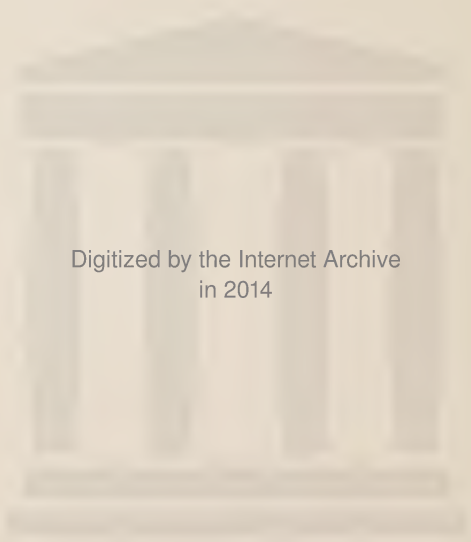
GATHERED IN PEKING BY  
FREDERICK MOORE



THE ANDERSON GALLERIES  
NEW YORK







Digitized by the Internet Archive  
in 2014









NECKLACE IN CARVED CORAL

[NUMBER 352]



04 - P 9471



119.8  
Q

CATALOGUE  
OF  
OLD MANCHU JEWELRY  
CARVED STONES, JADE, SNUFF  
BOTTLES, ENAMELS AND  
FINE FURNITURE

GATHERED IN CHINA BY  
THE WELL-KNOWN CONNOISSEUR  
FREDERICK MOORE  
OF NEW YORK AND PEKING

✓

R 2592

TO BE SOLD

THURSDAY, FRIDAY AND SATURDAY AFTERNOONS

MARCH 29, 30, AND 31, 1917

AT 2:30 o'clock

ON PUBLIC EXHIBITION FROM  
WEDNESDAY, MARCH 21<sup>ST</sup>

THE ANDERSON GALLERIES

MADISON AVENUE AT FORTIETH STREET

NEW YORK

THE ALEXANDER PRESS  
114-116 W. 27TH ST. N.Y.

## CONDITIONS OF SALE

1. All bids to be *PER LOT* as numbered in the Catalogue.
2. The highest bidder to be the buyer; in all cases of disputed bids the lot shall be resold, but the Auctioneer will use his judgment as to the good faith of all claims and his decision shall be final. He also reserves the right to reject any fractional or nominal bid which in his judgment may delay or injuriously affect the sale.
3. Buyers to give their names and addresses and to make such cash payments on account as may be required, in default of which the lots purchased to be resold immediately.
4. The lots to be taken away at the buyer's expense and risk within twenty-four hours from the conclusion of the sale, and the remainder of the purchase money to be absolutely paid on or before delivery, in default of which The Anderson Galleries, Incorporated, will not be responsible if the lot or lots be lost, stolen, damaged, or destroyed, but they will be left at the sole risk of the purchaser, and subject to storage charges.
5. To prevent inaccuracy in delivery, and inconvenience in the settlement of purchases, no lot will be delivered during the sale.
6. All lots will be exposed for public exhibition in The Anderson Galleries before the date of sale, for examination by intending purchasers, and The Anderson Galleries, Incorporated, will not be responsible for the correctness of the description, authenticity, genuineness, or for any defect or fault in or concerning any lot, and makes no warranty whatever, but will sell each lot exactly as it is, *WITHOUT RECOURSE*. But upon receiving before the date of sale, expert opinion in writing that any lot is not as represented, The Anderson Galleries, Incorporated, will use every effort to furnish proof to the contrary, and in default of such proof the lot will be sold subject to the declaration of the aforesaid expert, he being liable to the owner or owners thereof for damage or injury occasioned by such declaration.
7. *TERMS CASH*. Upon failure to comply with the above conditions any sum deposited as part payment shall be forfeited, and all such lots as remain uncleared after twenty-four hours

from the conclusion of the sale, will be resold by either private or public sale at such time as The Anderson Galleries, Incorporated, shall determine, without further notice, and if any deficiency arises from such resale it shall be made good by the defaulter at this sale together with all the expenses incurred thereby. This condition shall be without prejudice to the right of The Anderson Galleries, Incorporated, to enforce the contract with the buyer, without such re-sale.

8. Bids. We make no charge for executing orders for our customers and use all bids competitively, buying at the lowest price permitted by other bids.

9. The Anderson Galleries, Incorporated, will afford every facility for the employment of carriers and packers by the purchasers, but will not be responsible for any damage arising from the acts of such carriers and packers.

*Priced Copy of this Catalogue may be secured for \$1.50*

## The Anderson Galleries

INCORPORATED

MADISON AVENUE AT FORTIETH STREET, NEW YORK.

TELEPHONE, MURRAY HILL, 7680

SALES CONDUCTED BY MR. FREDERICK A. CHAPMAN.

## INTRODUCTION

The last of the interesting Collections which Mr. Frederick Moore, the well-known connoisseur, has brought to this country from China is now catalogued and placed on exhibition. The first of the collections was that of fine paintings and potteries gathered by Mr. Thomas R. Abbott, a prominent Peking authority on Chinese works of art; the second was a collection of old rugs and other woven things; the third was of old Manchu robes.

This final collection comprises many articles of jewelry; some interesting Mandarin chains, and peculiar old charms cut from crystal, amber, jade, amethyst, coral, turquoise, and other semi-precious stones; it also contains larger carved stones, even a pair of fu lions, guardians of a Mandarin's gate. Then there are numerous old snuff bottles, some beautiful enamel ware of peculiar Chinese shape and decoration; and finally a few pieces of furniture such as are seldom seen in this country.

## THE CHINESE DYNASTIES

SHANG DYNASTY	1766-1122 B. C.
CHOU DYNASTY	1122- 255 B. C.
CHIN DYNASTY	256- 206 B. C.
HAN DYNASTY	206 B. C.-220 A. D.
WEI DYNASTY	206- 265 A. D.
THE SIX DYNASTIES	265- 618 A. D.
T'ANG DYNASTY	618- 906 A. D.
THE FIVE DYNASTIES	906- 960 A. D.
SUNG DYNASTY	960-1280 A. D.
YUAN DYNASTY	1280-1368 A. D.
MING DYNASTY	1368-1644 A.D.
CH'ING DYNASTY	1644-1912 A. D.
K'ANG HSI	1662-1722 A. D.
YUNG CHENG	1723-1735 A. D.
CH'IEN LUNG	1736-1795 A. D.
CHAR CH'ING	1796-1820 A. D.
TAO KUANG	1821-1850 A. D.



# FIRST SESSION

THURSDAY AFTERNOON, MARCH 29, 1917

AT 2:30 O'CLOCK

*Lots 1 to 130*

## SNUFF BOTTLES

- 1 SNUFF BOTTLE IN BRASS CHAR CHING  
With carved round panels on the flat sides, one depicting a deer, the other a bird. Shoulders sustain weird animal heads. In the stopper a green stone is set.
  
- 2 SNUFF BOTTLE IN CLOUDY AGATE CHIEN LUNG  
With a horse, monkey in a tree chiseled on one side; a rooster, bat, and tree on the other. Stopper of silver and coral.
  
- 3 AGATE SNUFF BOTTLE  
Cloudy maroon in color, with flowers carved upon it. Green jade stopper.
  
- 4 CRYSTAL SNUFF BOTTLE  
Of fine clear stone, with only the suggestion of carving on one side. Crystal stopper.
  
- 5 PORCELAIN SNUFF BOTTLE CHAR CHING  
Of an ivory color. Numerous heavenly dogs depicted among the clouds. Gilded base and rim. Jade stopper.

- 6 SNUFF BOTTLE OF OLD JADE CHIEN LUNG  
Crude archaic chiseling on the sides representing dragons' heads combined with geometric devices. Stopper of coral and jade.
- 7 AGATE SNUFF BOTTLE CHIEN LUNG  
Of the color of cloudy amber. Faint design chiseled in relief on the sides. Green jade stopper.
- 8 BLUE AND WHITE PORCELAIN SNUFF BOTTLE  
CHIEN LUNG  
With an all-over floral design. Coral stopper.
- 9 OLD JADE SNUFF BOTTLE CHIEN LUNG  
Of the color of briny water. The *shou* character, dragons and other devices chiseled on the sides. Pink crystal stopper.
- 10 PORCELAIN SNUFF BOTTLE CHIEN LUNG  
In blue and white. A dragon in blue coiling around the bottle, which is of peculiar shape. A coral stud set in the stopper.
- 11 GLASS SNUFF BOTTLE  
In blue and white. Green jade stopper.
- 12 OLD JADE SNUFF BOTTLE CHIEN LUNG  
In white with discolorations. A sage carved in relief sitting before a burning censer. A red stopper.
- 13 GLASS SNUFF BOTTLE CHIEN LUNG  
In deep blue and gold. A tall slender bottle with a coral stud set into the brass stopper.

- 14 **SNUFF BOTTLE IN WHITE JADE** CHIEN LUNG  
Carved in the shape of a gourd with leaves. The stopper, which is of green glass, forms the stem of the fruit.
- 15 **SNUFF BOTTLE IN WHITE JADE** CHIEN LUNG  
Of fine shape, with archaic devices chiseled upon it. Pink crystal stopper.
- 16 **SNUFF BOTTLE IN DISCOLORED JADE**  
With archaic devices, including the dragon's head, carved on both sides. Stopper of pink coral and another jade.
- 17 **BLACK AND WHITE JADE SNUFF BOTTLE**  
Rectilinear, without decorations. Coral and turquoise stopper.
- 18 **AMBER-COLORED AGATE SNUFF BOTTLE**  
A nice piece of stone well carved in the shape of fruit and a squirrel. Green stopper.
- 19 **SNUFF BOTTLE OF VARI-COLORED GLASS**  
On a base of white, gold fish of numerous colors are scattered. Coral-colored stopper.
- 20 **WHITE JADE SNUFF BOTTLE**  
The sides containing four panel pictures of children and men at play. Green jade stopper.
- 21 **GLASS SNUFF BOTTLE** CHIEN LUNG  
In two colors. On a white base dragons are portrayed in amber-colored glass. Green glass stopper.

- 22 RUBY GLASS SNUFF BOTTLE  
Of octagon panels, with coral-colored stopper.
- 23 PORCELAIN SNUFF BOTTLE  
Showing sages painted on the sides. Coral-colored stopper.
- 24 RUBY-COLORED GLASS SNUFF BOTTLE  
Of rectilinear gourd shape. Coral-colored stopper.
- 25 TWO-COLORED GLASS SNUFF BOTTLE  
On a milk white base lotus flowers and scrolls are imposed in amber-colored glass. Green jade stopper.
- 26 WHITE JADE SNUFF BOTTLE  
With floral and bird devices carved on the sides. Pink and blue stopper.
- 27 BLUE AND WHITE GLASS SNUFF BOTTLE  
The white forming the base, and the designs of birds and flowers imposed upon the bottle proper in rich blue. Turquoise and coral stopper.
- 28 PAIR OF GLASS SNUFF BOTTLES  
Tall, slender bottles of milk-colored glass with floral designs imposed upon the base in an amber hue. Green jade stopper.

## PENDANTS AND CHARMS

- 29 PENDANT IN CLOUD-COLORED JADE  
A dragon coiling gracefully above a rectangular archaic design. Suspended by a thread holding seed pearls and a carved coral bead.

- 30 PAIR OF AMETHYST DROPS  
In the shape of fruit. Suspended on a thread holding seed pearls and green beads.
- 31 TWO-COLORED AGATE CHARM  
In cloud color and black, carved with artistic effect in a design of flowers and leaves. Suspended on a thread holding seed pearls and a green bead.
- 32 PINK AGATE CHARM  
With cloudy blue pendants. The agate is almost of the color of a goldfish, and is carved to simulate one, with huge eyes and head and flaring fins and tail.
- 33 AMBER-COLORED AGATE DROP  
Carved in three pieces with cloudy blue glass pendants, which are also carved.
- 34 AMETHYST PENDANT  
Carved in the shape of a squirrel on fruit. A clear piece of stone of nice color.
- 35 TURQUOISE CHARM  
Carved in the shape of two heavenly dogs, forming an irregular sphere.
- 36 LAPIS LAZULI CHARM  
Representing fruits and leaves, showing the Buddha's fingers. a fragrant Chinese fruit, and pomegranates.
- 37 CRYSTAL PENDANT  
Representing a gourd with leaves. A clear piece of stone suspended by the usual ornamented hanging.

- 38 CRYSTAL PENDANT  
Representing fruits and leaves.
- 39 AGATE CHARM  
Carved in the shape of lillies. Of a cloudy color, changing to brown at the lower end. Suspended by the usual decorated thread.
- 40 PENDANT IN MUTTON FAT JADE  
Representing two Chinese coins sustained by a bat; the symbols of good fortune and wealth.
- 41 PENDANT IN WHITE JADE  
With pink crystal drops and seed pearl ornamentation. The charm itself is carved in three pieces, the upper being a ring, the lower representing the character for happiness or good fortune.
- 42 CHARM IN MUTTON FAT JADE  
Representing a squirrel and monkey and also a butterfly and flower carved on the sides of a pear-shaped fruit.
- 43 KEY FOB IN MUTTON FAT JADE  
Representing the double happiness character.
- 44 GREEN JADE PENDANT  
Depicting a squirrel and fruits suspended by a hanging decorated with seed pearls.
- 45 KEY FOB IN WHITE JADE  
Suggesting two weird animals resting on their tails.

- 46 KEY FOB IN WHITE JADE  
Depicting a temple bell with a small dragon at the side and a larger one at top.
- 47 BROWN AGATE PENDANT  
Showing a fish and a frog on the back of a shell.
- 48 AMETHYST DROP  
In the shape of a fruit with leaves.
- 49 TURQUOISE PENDANT  
Dragons and bats carved in an oval design.
- 50 TURQUOISE PENDANT  
The device showing a squirrel among fruits and leaves.
- 51 AMETHYST DROP  
Suggesting a squirrel gnawing at a fruit.
- 52 WHITE JADE PENDANT  
Representing a circle containing a floral device and surmounted by the suggestion of a dragon.
- 53 AGATE PENDANT  
Of the color of burnt amber with imitation turquoise drops. The pendant proper is carved in three pieces.
- 54 AMBER-COLORED AGATE DROP  
Representing fruits and flowers.

55 KEY FOB OF WHITE JADE

With a little scene carved on one side and numerous Chinese characters on the other.

56 KEY FOB IN WHITE JADE

Representing a temple censer surmounted by a mythical dog.

57 KEY FOB IN WHITE JADE

Suggesting mythical animals above and below a divided circle.

58 AGATE PENDANT

Showing two little ducks in brown on a cloud-colored leaf.

59 AGATE PENDANT

Showing a squirrel in cloud color on an amber-colored leaf.

60 AGATE PENDANT

Carved to depict a temple pagoda with the suggestion of a priest and temple bells surrounded by flowers. Carved coral bead and seed pearl on the supporting chain.

61 LARGE AGATE PENDANT

Carved in the shape of a gourd. Of two colors. The gourd being of a cloudy hue, the leaves and blossoms in brown. Seed pearls and a carved coral bead on the supporting thread.

62 AMETHYST PENDANT

In the shape of fruit and leaves.





MANCHU LADY'S HEAD-DRESS

IN KINGFISHER FEATHER JEWELRY AND SEMI-PRECIOUS STONES

[NUMBER 316]



- 63 WHITE JADE PENDANT  
Holding symbols of Buddhism in a shield. A bat for good fortune above, with outspread wings.
- 64 WHITE JADE PENDANT  
Showing a child astride a gourd, with characteristic Chinese disregard of proportion.
- 65 BEAUTIFUL AMETHYST DROP  
Representing several fruits, including the fragrant Buddha's fingers. Of rich color.
- 66 LAPIS LAZULI PENDANT  
Showing a squirrel among fruit.
- 67 WHITE JADE KEY FOB  
In the shape of a shield with several dragons coiling over the top.
- 68 WHITE JADE CHARM  
Showing a fisherman with one foot resting on an enormous toadlike beast.
- 
- 69 DRAGON GIRDLE CLASP  
A beautiful piece of carved white jade representing a parent dragon and offspring. The clasp is in a single piece designed for a Mandarin's girdle.
- 70 SMALL GIRDLE CLASP  
In white jade. The two sections are linked by a dragon's head, and minor foliate dragons crouch upon the respective sides.

71 LARGE GIRDLE CLASP IN WHITE JADE

The two sections are held together by the suggestion of a dragon's head. Foliate dragons crouch upon either side of the clasp.

CHAINS AND NECKLACES

72 AMBER CHAIN WITH AMETHYST PENDANT

The pendant representing fruit and leaves.

73 AMBER CHAIN WITH WHITE JADE PENDANT

The pendant and the coral bead which binds it to the chain are both carved.

74 LONG AMBER CHAIN

Plain, without pendant.

75 LONG AMBER CHAIN

With white jade and coral pendant, the jade being carved in a dragon design, between which is a monkey and fruit.

76 PALE AMBER CHAIN

With coral and white jade pendant, the coral as well as the jade being carved. The pendant represents a shield and the suggestion of a foliate dragon with flowers entwined about it.

77 AMBER CHAIN WITH WHITE JADE PENDANT

Jade showing the happiness character surrounded by flowers and sustained by a bat, the symbol of good fortune.

78 LONG CHAIN IN DARK AMBER

With unusually fine pendant, carved to show lillies and leaves. Hung by a chain of seed pearls and a carved coral bead.

79 AMBER CHAIN WITH WHITE JADE PENDANT

Suggesting butterflies and fruits, suspended by seed pearls and a carved coral bead.

80 LONG AMBER CHAIN

Plain, without pendant.

81 TURQUOISE METRIX CHAIN

With white jade pendant carved in the design of a basket of flowers and a fish. Hung with seed pearl and a coral bead.

---

82 MANCHU HEAD DRESS IN KINGFISHER FEATHERS

A black framework ornamented with various Chinese designs showing principally bats among clouds, a symbol of good fortune. The kingfisher feathers are laid upon a brass framework in a way that resembles enamel. The beautiful tones of the feathers are relieved here and there by studs of semi-precious stones.

LARGER CARVED STONES

83 FIGURE OF A LOHAN IN SOAPSTONE

A statue of the disciple represented as a sage with pleasing expression and flowing robes. A realistic figure of an old man. The figure is impaired by having the feet broken.

Height, 8 inches.

84 CARVED AGATE CENSER CHIEN LUNG

Of a beautiful cloudy color. The vessel stands upon a tripod. From the lions' heads, which form the handles, loose rings are suspended. A lion cub surmounts the cover.

Height, with stand, 5 inches.

85 CENSER IN OLD JADE MING

A heavy carved bowl of discolored stone with numerous archaic devices chiseled upon the sides. The handles suggest mythological animals. Teakwood cover and stand.

Breadth, 6 inches.

86 BOWL IN OLD DISCOLORED JADE

Surrounded by a lotus scroll. Breadth, 7 inches.

87 SACRIFICIAL URN IN OLD JADE

With numerous archaic and other devices carved upon the sides. Of the shape of a temple vessel

Height, with stand, 8½ inches.

88 MYTHICAL LION IN CRYSTAL CHIEN LUNG

Length, 8 inches.

89 BEAUTIFUL JADE CUP CHIEN LUNG

Of a cloudy color, with flowers and fruits forming the handles and the decorations. Breadth, 4 inches.

90 SACRIFICIAL CUP IN CLOUDY JADE CHAR CHING

With foliate dragons forming the handles.

Width, 4½ inches.



PORCELAIN SNUFF BOTTLE

CHIEN LUNG

[NUMBER 345]





- 91 CRYSTAL GODDESS OF MERCY  
 Standing upon a jade rockery, a beautifully carved figure.  
 Height, 8 inches.
- 92 WHITE JADE WINE CUP CHIEN LUNG  
 With three dragons climbing upon the sides.  
 Height, with stand,  $2\frac{1}{2}$  inches.
- 93 BULLOCK IN IVORY-COLORED SOAPSTONE  
 A beautiful piece of realistic carving.  
 Length, 4 inches.
- 94 AMETHYST ORNAMENT CUP CHIEN LUNG  
 One side being of crystal hue, the other of purple; showing  
 a bird and flowers beautifully carved.  
 Height, with stand, 4 inches.
- 95 PAIR OF JADE CUPS KANG HSI  
 Surrounded by a studded band. Rectilinear handles. Rich  
 cloudy color. Width,  $4\frac{1}{2}$  inches.
- 96 LOTUS FLOWER IN CARVED JADE MING  
 Forming a cup. The branches and leaves making the han-  
 dle of the vessel. Width,  $5\frac{1}{4}$  inches.
- 97 JADE CUP OF NOTABLY THIN CARVING  
 In imitation of eggshell porcelain. A grain of rice design  
 along the edge. Width, 3 inches.
- 98 OLD JADE SACRIFICIAL CUP MING  
 With handles suggesting animal heads. Decorated only  
 with studs. Width,  $4\frac{1}{2}$  inches.

99 CENSER IN CARVED AGATE

A beautiful small incense pot in cloudy agate. Lion's heads form the handles and a lion cub surmounting the cover.

Height with stand, 5 inches.

100 SACRIFICIAL CUP IN OLD JADE MING

In a discolored white. Sides decorated with studs. Handles of plain lines.

Width, 5 inches.

101 TEA CUP OF OLD JADE MING

In discolored white. A dragon coiling upon the sides forms the handle of the cup which is not perfectly round but slightly elongated.

Height, with stand, 3 inches.

102 CENSER IN CLOUDY AGATE CHIEN LUNG

On a tripod of legs surmounted with animal heads. Lion heads hold the handles, and a lion cub surmounts the cover. Of a beautiful cloudy color.

Height, with stand, 6½ inches.

103 TEA POT IN OLD SOAPSTONE MING

A tall cylindrical vessel surrounded by prunus blossoms, which form the handles and spout. The pot is in the shape of a stalk of bamboo.

Height, with cover and stand, 9 inches.

104 SCEPTER IN WHITE JADE

With bats and cloud design. Mounted on a red silk stand, with red tassels.

Length, 14 inches.

## ENAMELED WARES

- 105 ENAMEL BOWL IN BRILLIANT COLORS  
Showing scenes with many human figures, depicting beggars and sages in rural landscapes.  
Height, with stand, 5 inches.
- 106 PAIR OF OCTAGON SHAPE SAUCERS CHIEN LUNG  
With flower and butterfly design in delicate tones.  
Width,  $4\frac{1}{2}$  inches.
- 107 ENAMEL SAUCER IN DELICATE COLORS  
Showing flowers, fruits, and butterflies beautifully drawn. The plate is unfortunately scratched. Width, 4 inches.
- 108 PAIR OF ENAMELED SAUCERS CHIEN LUNG  
Showing fruits and flowers in delicate colors.  
Diameter, 6 inches.
- 109 SWEETMEAT BOWL IN TURQUOISE BLUE  
With flowers, fruits, and butterflies in various delicate colors. White enamel lining. Such vessels were sent at New Year's time from house to house with the seasons good wishes.  
Height, with stand,  $9\frac{1}{2}$  inches.  
Width, 12 inches.
- 110 SMALL HOR HOR BUDDHA MING  
The God of Your Wishes. In pottery with an ivory colored glaze and considerable crackle.  
Height, with stand, 3 inches.

- 111 MOTHER-OF-PEARL INLAID LACQUER PLATE  
The design showing dragons floating among clouds and Buddhist emblems. Diameter, 13½ inches.
- 112 MOTHER-OF-PEARL INLAID LACQUER PLATE  
Mate to foregoing. Diameter, 13½ inches.
- 113 OLD IVORY DESK SCREEN CHIEN LUNG  
With a delicately carved mountain scene on one side and a medallion showing Chinese characters on the other.  
Height, 10½ inches.
- 114 PAIR OF TEMPLE CANDLESTICKS  
In bronze lacquer. Around the candlesticks intricate dragons coil and imitation flames project from the top. Unfortunately one of the dragon's head has been broken off.  
Height, 16 inches.
- 115 SWEETMEAT BOWL IN LACQUER  
Inset with mother-of-pearl. Designs showing the lotus, swastika, and bat, the symbols of Buddhism and Good Fortune. Diameter, 11 inches.
- 116 SMALL DESK SCREEN IN CARVED BAMBOO  
Mounted on a black wood stand, with a delicately carved design of swallows and plum blossoms. Height, 14 inches.
- 117 JEWEL CABINET IN BLACK  
Made in the shape of a Chinese wardrobe with opening doors and drawers. Height, 15 inches.
- 118 JEWEL CABINET IN BLACK  
Mate to foregoing. Height, 15 inches.

119 OLD LACQUER FLOWER POT STAND  
With lotus designs in black and gold. Height, 12 inches.

120 OLD LACQUER FLOWER POT STAND  
Mate to foregoing. Height, 12 inches.

## EMBROIDERY AND BROCADES

121 EMBROIDERED HANGING IN MANY COLORS  
Showing flowers and birds on a dark background.  
Size, 26 inches x 56 inches.

122 LONG KUS-SU HANGING  
The design being of birds and flowers on a drab-colored field. Along the white border are little embroidered scenes with many little figures. Size, 16 inches x 75 inches.

123 PAIR OF DRAGON PANEL HANGINGS  
In blue, with dragons in gold thread and Buddhist symbols in colors; an upper panel in white embroidered with butterflies and little blossoms. Size, 32 inches x 64 inches.

124 GREEN AND GOLD DRAGON HANGING  
Showing symbols of Buddhism as well as the dragon of the Emperor and the double happiness character, also the bat for good fortune. Size, 39 inches x 49 inches.

125 LONG DRAGON HANGING  
In blue and other colors, with a white upper panel showing butterflies and floral sprays.  
Size, 44 inches x 70 inches.

126 PAIR OF UPRIGHT TEMPLE HANGINGS

In red, with various symbols and designs in gold thread and colors, showing the Heavenly Dog, the Dragon, *Shou* character, and Buddhist symbols.

Size, 20 inches x 65 inches.

127 RED TEMPLE HANGING

Being the central piece to the foregoing panels, and having an over panel of green on which three temple lamps are embroidered.

Size, 40 inches x 32 inches.

128 DRAGON TABLE COVER

On a blue field, the dragons are woven in gold thread, with various other symbols.

Size, 34 inches x 54 inches.

129 LONG HANGING IN BLACK AND GOLD

Showing birds with the wave and dragon design.

Size, 24 inches x 62 inches.

130 DRAGON TABLE COVER

On a field of blue, the dragons are woven in gold thread.

Diameter, 51 inches.

## SECOND SESSION

FRIDAY AFTERNOON, MARCH 30, 1917

AT 2:30 O'CLOCK

*Lots 131 to 260*

131 AMETHYST PENDANT

Carved in the shape of an animal with bifurcated tail, perched upon a pear.

132 WHITE JADE PENDANT

A panel showing an old sage and a deer; sustained by a bat for good fortune.

133 AMETHYST PENDANT

Chiseled into the shape of a fruit with leaves.

134 LAPIS LAZULI PENDANT

Cut in floral shape, with a coral bead and seed pearls on the mounting string.

135 SMALL AMETHYST PENDANT

Of fruit shape.

136 LARGE ROUND WHITE JADE PENDANT

Showing a bird among flowers, framed by a bamboo shaped circle.

137 LARGE ROUND WHITE JADE PENDANT

Mate to the foregoing.

- 138 TWO-COLOR AGATE PENDANT  
The upper shell-shaped portion being in cloudy amber, the flower and insect, at the side, of a brownish hue.
- 139 THREE-COLOR AGATE PENDANT  
Carved in the shape of a leaf with a shell; in black, brown, and cloudy colors.
- 140 CRYSTAL PENDANT  
In the shape of fruits and leaves. A clear piece of stone.
- 141 CRYSTAL PENDANT  
In the shape of fruits and leaves. Smaller than the foregoing.
- 142 TWO-COLOR JADE PENDANT  
With insects carved in the darker color, upon a leaf which is in a paler hue.
- 143 TWO-COLOR JADE PENDANT  
Of a curious cloudy crystal color with a touch of green. The design is of flowers and birds.
- 144 GREEN JADE PENDANT  
The carving shows blossoms and a bamboo stalk.
- 145 WHITE JADE PENDANT  
The design being a bird among flowers.
- 146 TWO-COLOR AGATE PENDANT  
In the shape of flowers and fruits, in cloudy and brown shades.





PENDANTS OF CARVED JADE AND OTHER STONES



- 147 WHITE JADE PENDANT  
In the form of a shield, showing Chinese characters on one side and a child on the other.
- 148 PAIR OF GREEN JADE PENDANTS  
Forming a cluster of flowers and lotus leaves.
- 149 PAIR OF WHITE JADE PENDANTS  
With pink crystal drops, showing the happiness character.
- 150 GREEN JADE PENDANT  
Carved in the shape of pomegranates.
- 151 TURQUOISE PENDANT  
Carved in the shape of a squirrel gnawing at a melon.
- 152 GREEN JADE PENDANT  
Carved in the shape of fruits, with a bat imposed upon one.
- 153 PAIR OF AMETHYST DROPS  
Carved in the shape of pears.
- 154 LAPIS LAZULI PENDANT  
Showing the Buddha's Fingers with other fruits.
- 155 PAIR OF WHITE JADE PENDANTS  
Carved in three pieces, the lower being the happiness character.
- 156 GREEN JADE PENDANT  
In the shape of a fruit with a butterfly at one end.

- 157 AMETHYST PENDANT  
Cut in the shape of a pomegranate with leaves and a stalk.
- 158 AMETHYST PENDANT  
Mate to the foregoing.
- 159 WHITE JADE PENDANT  
In the shape of an endless knot with four dragons' heads.
- 160 THREE-COLORED AGATE PENDANT  
Carved in the shape of a fruit, with a worm crawling up the side. In black, brown and cloudy colors.
- 161 DARK AGATE PENDANT  
Carved in the shape of a leaf and a gourd.
- 162 TWO-COLORED AGATE PENDANT  
Carved in the shape of a gourd, which is of the cloudy color; and two crabs, which are in black.
- 163 AGATE PENDANT IN AMBER COLOR  
With cloudy blue drops. The pendant is carved in three pieces.
- 164 AGATE PENDANT IN THREE COLORS  
Showing a fish, a frog, and a shell upon a leaf.
- 165 PAIR OF EARRING DROPS  
In coral, kingfisher feather, and pearl. The coral beads form bunches of grapes, surmounted by butterflies in the blue feather.

- 166 PAIR OF AMETHYST DROPS  
Carved in the shape of fruit.
- 167 AMETHYST DROP  
Carved in the shape of a fish.
- 168 WHITE JADE PENDANT  
With dragons crawling about a circle.
- 169 AMETHYST PENDANT  
In the shape of a pear with leaves and a stalk.
- 170 WHITE JADE PENDANT  
Showing a bird and flowers beside the trunk of a tree, on which Chinese characters are carved.
- 171 WHITE JADE GIRDLE CLASP  
In two parts, buckled by a dragon's head. Foliate dragons on each plate of the buckle.
- 172 WHITE JADE GIRDLE CLASPS  
In two parts, buckled by a dragon's head, with a dragon on each plate of the buckle.
- 173 WHITE JADE GIRDLE CLASP  
In a single piece, carved in the shape of a parent dragon and a younger one. A beautiful piece of clear stone, carefully cut.
- 174 GREEN JADE GIRDLE CLASP  
In a single piece, carved in the shape of a parent dragon and a younger one. A piece of green and white stone.

## CHAINS AND NECKLACES

- 175 AMBER CHAIN WITH WHITE JADE PENDANT  
The pendant is carved in three pieces, the lowest showing the happiness character.
- 176 AMBER NECKLACE WITH AMBER PENDANT  
The pendant is a cloudy amber, while the beads of the necklace are clear. Between the two a carved coral bead and seed pearls from the binding chain.
- 177 LONG RICH AMBER CHAIN  
With white jade pendant, carved in the shape of a bird surrounded by beads.
- 178 AMETHYST NECKLACE  
With green pade pendant carved in the shape of a squirrel and fruit.
- 179 LONG PLAIN AMBER CHAIN  
Of fine clear beads. No pendant.
- 180 SLIGHTLY CLOUDY AMBER CHAIN  
Of fine large beads, with a white jade pendant and a carved coral bead.
- 181 AMBER NECKLACE WITH WHITE JADE PENDANT  
The pendant is delicately carved, beads are of a pale color.
- 182 AMBER NECKLACE WITH AN AGATE PENDANT  
The agate is carved in the shape of fruit and leaves, and there is a carved hollow bead between the pendant and the chain, the latter is of a pale color.



MANDARIN OFFICIAL NECKLACE IN GREEN  
JADE AND OTHER STONES

[NUMBER 360]





183 AMBER NECKLACE WITH GREEN JADE PEND-  
ANT

The pendant is carved in the shape of fruits and leaves, and there are seed pearls and a carved coral bead attaching it to the necklace, which is of a pale color.

184 FINE AMBER NECKLACE

Of large clear beads. Holding a white jade pendant, in the shape of an intricate foliate dragon. The blue bead between the amber and the pendant lends distinction to the chain.

185 FINE AMBER NECKLACE

Of large clear beads; with a white jade pendant carved in the shape of a butterfly with outstretched wings. The pendant is fastened to the chain by a string of seed pearls and a carved coral bead.

186 LONG IVORY CHAIN

Of large, beautifully polished beads, with a very fine pendant of clear green jade, carved in the shape of leaves and flowers. An unusual necklace.

187 MANCHU LADY'S HEAD DRESS

A black frame is covered with ornamentations in kingfisher feather, studded with imitation precious stones. The feather is placed upon a screen of brass as if it were enamelled. The device of bats and *shou* characters are for good fortune.

## SNUFF BOTTLES

188 OLD JADE SNUFF BOTTLE CHIEN LUNG

Of a brown color, carved in the shape of a fruit with an insect at one side, and leaves trailing down the front.

- 189 OLD JADE SNUFF BOTTLE CHIEN LUNG  
An undecorated globular piece of jade of three colors, with a coral stopper.
- 190 OLD AGATE SNUFF BOTTLE CHIEN LUNG  
Cut in the shape of two bats, the symbol of good fortune. Green glass stopper.
- 191 TWO-COLOR GLASS SNUFF BOTTLE CHIEN LUNG  
The base being in clear white and the design in amber color. Turquoise and coral-colored stopper.
- 192 AMBER-COLORED AGATE SNUFF BOTTLE  
CHAR CHING  
In the shape of a fruit and branches. Of a beautiful clear color.
- 193 LARGE WHITE JADE SNUFF BOTTLE CHIEN LUNG  
Carved in the shape of a pear, with leaves folding about it, and two butterflies. Silver stopper in the shape of a stalk of the fruit.
- 194 AGATE SNUFF BOTTLE CHIEN LUNG  
In cloudy brown, with horses carved on the sides. Coral and turquoise-colored stopper.
- 195 PORCELAIN SNUFF BOTTLE CHIEN LUNG  
In several colors, with little faces depicted on the sides. White jade stopper.
- 196 TWO-COLOR AGATE SNUFF BOTTLE  
CHIEN LUNG  
The base being of a cloudy color, the designs of lotus blossoms chiseled in the brownish tone. An unusual piece in having the brown upon three sides. Green glass stopper.

- 197 GLASS SNUFF BOTTLE CHAR CHING  
Of unusual design, like a whirling cloud in cream and pink.  
Green glass stopper.
- 198 GREEN GLASS SNUFF BOTTLE CHIEN LUNG  
Imitating jade, with pink crystal stopper.
- 199 PORCELAIN SNUFF BOTTLE CHIEN LUNG  
Showing many sages in various colors floating among the  
clouds.
- 200 AGATE SNUFF BOTTLE CHIEN LUNG  
With a cat among flowers carved on one side, and Chinese  
characters on the other. Green stopper.
- 201 OLD JADE SNUFF BOTTLE CHIEN LUNG  
With a fish blowing clouds from its mouth chiseled on one  
side, and the suggestion of clouds upon the other. Green  
stopper.
- 202 OLD JADE SNUFF BOTTLE  
With a peculiar iridescence, carved in the shape of a glob-  
ular fruit. Pink stopper.
- 203 AGATE SNUFF BOTTLE OF A CLOUDY BROWN  
COLOR CHAR CHING  
In the shape of a gourd with branches and leaves trailing  
down, and a bat, symbol of good fortune on one side. Green  
stopper.
- 204 FINE OLD WHITE JADE BOTTLE CHIEN LUNG  
With animal heads at the shoulder and Chinese characters  
carved on each side almost obliterated by use. Green, pink  
and white stopper.

- 205 **TURQUOISE SNUFF BOTTLE** CHIEN LUNG  
Of the natural shape of the stone; with a coral stopper carved in the shape of a branch.
- 206 **THREE GLASS SNUFF BOTTLES** CHAR CHING  
On a white base the designs are in blue glass, one showing a phoenix, the second a dragon, and the third a rural scene.
- 207 **CUT GLASS SNUFF BOTTLE**  
With a historical Chinese scene painted inside. The bottle is cut in an octagon shape. Green stopper.
- 208 **OLD JADE SNUFF BOTTLE** TAO KWANG  
In a deep hue of brown, with animal heads on shoulders simulating handles. Green stopper.
- 209 **CLOUDY AGATE SNUFF BOTTLE**  
With goldfish among water plants painted as if swimming inside. Green stopper.
- 210 **BLUE GLASS SNUFF BOTTLE** TAO KWANG  
Of peculiar shape, with Chinese inscription chiseled down one side. Coral-colored stopper.
- 211 **CLOUDY AGATE SNUFF BOTTLE**  
With goldfish and water plants painted within, as if floating about in the bottle. Green stopper.
- 212 **TWO-COLOR GLASS SNUFF BOTTLE**  
The base being of pink, with a design of dragons and phoenix in relief in black glass. Green glass stopper.



LITTLE FIGURE CARVED IN CORAL

[NUMBER 378]



213 CLOUDY AGATE SNUFF BOTTLE

With little scenes painted on the inside. Carved coral stopper with a coiled dragon.

214 TWO-COLOR GLASS SNUFF BOTTLE TAO KWANG

On a base of white, Chinese characters and a tree are imposed in amber color. Green stopper.

215 TWO-COLOR GLASS SNUFF BOTTLE

On a cloudy base, a design of captive birds, with the suggestion of animal heads on the shoulders simulating handles, are imposed in ruby color. Green stopper.

### JADE AND OTHER CARVED STONES

216 PAIR OF JADE CEREMONIAL CUPS CHIEN LUNG

Of a beautiful cloudy color and rectangular lines, the bowl itself being carved in an octagon shape, with the suggestion of an archaic decorative device on the handles.

Width,  $4\frac{1}{2}$  inches.

217 SMALL WHITE JADE IMAGE

With a turquoise cup in hand.

Height,  $2\frac{1}{2}$  inches.

218 CARVED FIGURE OF AN OLD MAN

In soapstone. Probably representing a disciple of Buddha. The expression on the face is particularly good. Though every bone in the body seems to be protruding from the skin the old man smiles. He holds a chain of beads in one hand, and is resting in a seated posture. Mounted on a black wood stand.

Height, with stand, 6 inches.

219 CARVED AGATE BOWL

A beautiful small bowl in two colors of agate. The bowl itself is of the cloudy color and the delicate spray of flowers that borders the rim is of an amber hue. Small rings carved apart from the bowl hang loose upon the handles.

Width,  $4\frac{3}{4}$  inches.

220 LITTLE AGATE BOWL

Carved in the shape of a lotus blossom with a leaf and a bud at the side. The stone is of two colors, the blossom being cut from the cloudy hue, the leaf and bud from the amber color.

221 WHITE JADE BOWL

In the shape of a lotus blossom with the stalk forming the handle of the cup. Of cloudy color. Width, 5 inches.

222 DELICATELY CARVED JADE CUP

In the shape of a lotus blossom, with a stalk, leaves and a bud at the side forming the intricate handle. Finely chiseled.

Width, 4 inches.

223 CREAM COLORED JADE CUP

In the shape of a lotus blossom with leaves and buds well chiselled forming handles.

Width, 4 inches.

224 AGATE CEREMONIAL CUP

Of thin carving in cloudy color almost transparent. The design of the handles is in bamboo stalks.

Width, 4 inches.

225 SMALL AGATE BOWL

In two-colored stone of a beautiful shape, representing a large grape leaf in the cloudy hue, with grapes, smaller leaves and a squirrel in the amber color. Width, 3 inches.



- 226 PAIR OF JADE CEREMONIAL CUPS  
Of a cloudy color. A studded band surrounds the cups, handles carved in a dragon head design. Width, 4 inches.
- 227 RHINOCEROS HORN CEREMONIAL CUP  
A beaker-like vessel with dragons carved on the sides and a band containing archaic devices.  
Height, with stand, 4½ inches.
- 228 CARVED AGATE BOWL  
In the shape of a grape leaf, with minor leaves and grapes folding over it. Of a beautiful amber and cloudy color.  
Width, 4½ inches.
- 229 SMALL GODDESS OF MERCY  
Beautifully carved little Kwanyin in a nice color of soapstone. The figure is represented seated and is holding a rolled scroll in her hand. Mounted upon a base of brownish stone.  
Height, 6 inches.
- 230 CARVED BOWL IN CREAM WHITE JADE  
With the branch of a tree in blossom forming the handle and two dragons actively crawling over the side. A slight touch of a brownish color enhances the white of the bowl.  
Width, 4½ inches.
- 231 ROUGH AMETHYST STONE  
With a small white jade Buddha set into it in the manner that gods are set in cave temples in various parts of China.  
Width, 8 inches.
- 232 JADE SACRIFICIAL CUP AND BEAKER  
In old jade, of fine archaic lines and decorations, including two coiling dragons. Both beaker and cup have been broken and repaired.  
Length of beaker, 6 inches; width of cup, 5 inches.

## ENAMEL WARE

### 233 PLATE OF IRREGULAR SHAPE

In lavender with birds and flowers beautifully drawn in faint colors. Length, 8 inches.

### 234 TRAY IN PEKIN ENAMEL

On which is depicted a scene of men and women on a lawn; delicately painted in many colors.

Length, 11½ inches.

## BROCADES AND EMBROIDERIES

### 235 SQUARE TABLE COVER

On black silk, dragons in gold thread surrounded by clouds and water in green and red; bats form a portion of the decoration. Size, 38 inches x 60 inches.

### 236 CIRCULAR DRAGON TABLE CLOTH

On a rich blue base the dragon, cloud and water design are woven in gold thread and several colors. Broad gold brocaded bands surround the cloth. Diameter, 48 inches.

### 236a CIRCULAR DRAGON TABLE CLOTH

Similar to foregoing.

### 237 RED AND GOLD HANGING

With a green border showing dragons, symbols of Buddhism, bats for good fortune, and double happiness character. Size, 40 inches x 49 inches.

### 238 RED AND GOLD PANEL HANGING

With other colors in the embroidery, showing a mythical lion, the pomegranate emblem, a vase of flowers and a censor, and the *shou* character. Size, 31 inches x 61 inches.

239 RED AND GOLD PANEL HANGING

Mate to foregoing.

240 RED, GOLD AND BLACK HANGING

The central panel of the foregoing pair, with a black overhanging upper border, upon which fruits are embroidered in gold thread.                      Size, 32 inches x 36 inches.

241 PAIR OF BLUE AND GOLD DRAGON PANELS

With the conventional Buddhist devices and symbols of the Emperor. An upper overhanging panel of white embroidered with flowers and birds.

Size, 31 inches x 60 inches.

242 SET OF FOUR PANELS IN GOLD AND GRAY

With four Dieties set upon the field of each panel.

Size, 10 inches x 46 inches each.

243 EMBROIDERED PANEL SCENE

In brown and blue; showing children at play in the country, some lighting fire crackers, others carrying a paper dragon, one flying a kite, and still others playing musical instruments.                      Size, 30 inches x 80 inches.

244 EMBROIDERED PANEL SCENE

Mate to foregoing.

Size, 30 inches x 80 inches.

245 RED AND BLACK EMBROIDERED HANGING

With blue and white butterflies and floral sprays scattered over the red field. Medallion floral decorations on the black upper band.                      Size, 72 inches x 90 inches.

## PENDANTS AND CHARMS

246 WHITE JADE PENDANT

Carved in the shape of a fish and a lotus blossom, and suspended by a string ornamented with seed pearls and a carved coral bead.

247 TWO-COLOR AGATE PENDANT

Carved in the shape of a cluster of gourds and leaves.

248 TURQUOISE PENDANT

Carved in the shape of two heavenly dogs, one standing upon the feet of the other.

249 AMETHYST PENDANT

Of good clear color, carved in the shape of a pomegranate.

250 BEAUTIFUL WHITE JADE PENDANT

Representing a cluster of grapes and leaves with a squirrel at the side.

251 AMETHYST PENDANT

Carved in the shape of a fruit cluster. Clear pale color.

252 GREEN JADE PENDANT

In the shape of a cluster of flat lotus leaves.

253 PAIR OF CORAL DROPS

With kingfisher feather and pearls completing the design, which represents bunches of grapes with butterflies above them.

254 TURQUOISE MATRIX PENDANT  
In the design of a pomegranate with a frog at the side.

255 AMETHYST PENDANT  
In the shape of a pomegranate with leaves and a stalk.

## CHAINS AND NECKLACES

256 FINE AMBER CHAIN  
Of large clear beads without pendant.

257 TURQUOISE MATRIX CHAIN  
With white jade pendant in a circle containing Buddhist symbols; attached to the chain by a string of seed pearls with a carved coral bead.

258 AMBER CHAIN  
With white jade pendant, carved in the shape of a bird and held in place by a string of seed pearls and a carved coral bead.

259 LONG AMBER CHAIN  
Of fine clear beads without pendant.

260 LONG AMETHYST CHAIN  
Of rich dark color with an amethyst drop carved in the shape of fruit and leaves, and suspended by a short string of white jade and seed pearls.

## THIRD SESSION

SATURDAY AFTERNOON, MARCH 31, 1917

AT 2:30 O'CLOCK

*Lots 261 to 434*

### PENDANTS AND CHARMS

The carving of small stones for charms, pendants, necklaces, bracelets, and other articles of jewelry has long been a special feature of Chinese art. The stone carver will take any beautifully colored stone and from the natural shape that it possesses obtain an inspiration, seeing in it a possible design of fruits or flowers, birds or animals. He will then proceed to put this inspiration into effect with the least possible carving. It will be seen that nearly all the carved amethysts take the shape of fruits or flowers which hang to a point. This is the shape that the stone naturally assumes in breaking up. Sometimes two-colored pieces are used with great effect, designs in relief being chiseled in one color and the body of the charm, snuff bottle, or whatever the carving may be, left in the other hue. An observation and even a study of these numerous pendants, which the Chinese are now discarding in exchange for European jewelry, will interest any lover of Chinese things.

261 AMETHYST PENDANT

In the shape of a small melon, with leaves and a stalk.

262 WHITE JADE PENDANT

In the shape of curious lily and leaves. A particularly nice piece of carving.

263 WHITE JADE PENDANT

Representing a parrot among branches, surrounded by a frame in bamboo design.

264 SMALL AMETHYST PENDANT

Of rich dark color, representing a fruit and leaves, with the suggestion of a little animal at one side.



TALL CARVED IVORY FIGURE

[NUMBER 379]





265 CLOUDY AGATE PENDANT

With two frogs upon a leaf.

266 CLOUDY AMBER PENDANT

Representing a fruit cluster. The amber is of two shades, paling from a clear dark color to a cloudy yellow.

### GIRDLE CLASPS

267 WHITE JADE GIRDLE CLASP

In two parts, held together by a dragon's head. Pomegranates and the Buddha's fingers, a fragrant fruit, carved upon the panels.

268 GREEN JADE GIRDLE CLASP

With a cluster of dragons on each of the two parts, which are held together by a dragon's head, in which an amethyst is studded.

269 WHITE JADE GIRDLE CLASP

With lotus flowers carved on either side and held together by a dragon's head.

270 GILDED GIRDLE CLASP

With semi-precious stones set into the three parts.

### PENDANTS

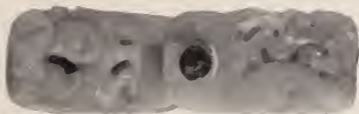
271 STRANGE CORAL PENDANT

Carved like a wierd dragon's head emerging from a shell and clutching a ball in its tusks.

- 272 TURQUOISE MATRIX PENDANT  
Carved in the shape of fruits and flowers
- 273 GREEN JADE PENDANT  
A beautifully carved lotus group with a paling to a crystal color on one side.
- 274 CLOUDY AMBER PENDANT  
Carved in the shape of a gourd cluster with leaves.
- 275 WHITE JADE PENDANT  
With a dragon crouching on top, his tail trailing down one side of a shield. Carved coral bead upon the hanging.
- 276 WHITE JADE PENDANT  
Representing a cluster of gourds and leaves.
- 277 RECTANGULAR GREEN JADE PENDANT  
Representing flattened lotus leaves.
- 278 DARK GREEN JADE PENDANT  
Carved in a rectangular group of flattened lotus leaves, hung by a coral and seed pearl chain.
- 279 WHITE JADE PENDANT  
A beautiful studded disc in the shape of a wheel, with loose central axle and archaic devices.
- 280 WHITE JADE PENDANT  
Carved in the shape of a group of animals.

- 281 **AMBER-COLOR AGATE PENDANT**  
Carved in the shape of goldfish with huge eyes and heads and flaring tails.
- 282 **PALE AGATE PENDANT**  
Of beautiful color and design. Dragons coiling about a central shield, on which scenes are carved. Hung by a string of seed pearls and a carved coral bead.
- 283 **WHITE JADE KEY FOB**  
Carved in the shape of a toad, with the knots upon its back and muscles in its legs. Unusually well chiseled.
- 284 **WHITE JADE PENDANT**  
In the shape of a shield, with a Foo Dog on one side and seal characters on the other. Surmounted by an archaic device.
- 285 **THREE-COLOR AGATE PENDANT**  
In the shape of a crab and leaves; in black, brown and cloud color.
- 286 **GREEN JADE PENDANT**  
In the shape of bamboo stalks and leaves. Hung by a string with coral bead and seed pearls.
- 287 **GREEN JADE PENDANT**  
In the shape of melons and leaves, with a butterfly on one side, where the stone is of a brownish hue.
- 288 **TWO-COLOR JADE PENDANT**  
With a goldfish in red upon a shell of cloudy color. An unusual piece of stone.

- 289 GREEN JADE PENDANT IN FISH DESIGN  
With huge eyes and head, and flaring tail.
- 290 WHITE JADE PENDANT  
Carved in the shape of a captive eagle surrounded by a frame of beads.
- 291 PALE GREEN JADE PENDANT  
Carved in the shape of melons and leaves.
- 292 WHITE JADE PENDANT  
Showing an eagle in a shield.
- 293 WHITE JADE PENDANT  
Carved in the shape of an old man carrying a small boy on his back.
- 294 GREEN JADE PENDANT  
In the shape of flattened leaves, with a slight discoloration on one side where a brown hue is taken on.
- 295 WHITE JADE PENDANT  
Of shield shape, showing seal characters on one side and a little scene with a sage in a country garden on the other.
- 296 TWO-COLOR GREEN JADE PENDANT  
With a cloudy crystal color mottling the green. Of unusual carving, the center of the stone being hollowed out, the leaves folding over it.
- 297 AMBER-COLOR AGATE PENDANT  
Carved in the shape of gourds and leaves. A beautiful piece of stone.



GIRDLE CLASPS OF CARVED JADE AND  
OTHER STONES



- 298 **THREE-COLOR AGATE PENDANT**  
In a design of leaves and fruit; in brown, black and cloudy colors.
- 299 **WHITE JADE PENDANT**  
In the design of a mythical winged animal with a bird-like tail.
- 300 **CIRCULAR WHITE JADE PENDANT**  
A beautifully carved design of bats and feather-like foliations around a circle, the axle of which is loose.
- 301 **GREEN JADE PENDANT**  
Representing peaches on a branch.
- 302 **PINK CORAL PENDANT**  
With dragonlike beasts coiled over a circle.
- 303 **CORAL-COLOR AGATE PENDANT**  
Representing two heavenly dogs, circling upon each other's feet.
- 304 **WHITE JADE PENDANT**  
Representing a small boy resting upon a leaf. Delicately carved.
- 305 **GREEN JADE PENDANT**  
Of fine color, representing a squirrel among fruits and leaves.

306 THREE-COLOR AGATE PENDANT

Representing a crab among shell-like objects. The stone is unusual in being hollowed. Colors are brown, black and cloudy.

307 GREEN JADE PENDANT

Of fine color. With a dragon in relief carved upon a shield.

---

308 CORAL FINGER RING

With *shou* character for good fortune carved on the side.

### CHAINS, NECKLACES AND OTHER JEWELRY

309 DARK AMBER NECKLACE

With white jade pendant showing a bat for good fortune and Chinese characters and devices. Attached to the chain by a string of seed pearls and a coral bead.

310 TURQUOISE MATRIX NECKLACE

With a turquoise pendant, carved in the shape of squirrels among fruits and leaves, attached to the chain by a string of seed pearls and a carved coral bead.

311 RICH AMBER CHAIN

With white jade pendant in the shape of a butterfly, fruits, and leaves; attached to the chain by a string of seed pearls and a coral bead.

312 LONG AMETHYST CHAIN

With an amethyst pendant in the design of fruits and leaves, attached to the chain by a string of seed pearls and a carved coral bead.



313 OVAL BELT BUCKLE

Gilded and holding a pink crystal.

---

314 OLD IVORY FAN

With Chinese characters and a blossom painted on the folds, and carved ivory devices on the sides. Held in a case covered with *shou* characters for good fortune.

---

315 MANCHU LADY'S HEAD DRESS

On a framework of black, bird and flower designs in kingfisher feathers are spread. The blue feathers are laid upon a brass framework as if they were enamelled upon it. The happiness character, a bat for good fortune, and a butterfly also appear.

316 MANCHU LADY'S HEAD DRESS

Heavily ornamented with kingfisher feather jewelry, containing many semi-precious stones and imitation pearls. Most of the decoration simulates the phoenix, the emblem of the Empress. Intricate designing.

[*See Illustration*]

317 SET OF FOUR HAT PINS

In kingfisher feathers, and semi-precious stones, and imitation pearls.

## SNUFF BOTTLES

318 OLD GLASS SNUFF BOTTLE CHIEN LUNG

In two colors, with dragons in deep amber tone twisting about over a field of cloudy glass. Green stopper.

- 319 **WHITE JADE SNUFF BOTTLE**  
 In the shape of the Buddha's fingers, a fragrant Chinese fruit. Beautifully carved. Green glass stopper simulating the stem of the fruit.
- 320 **OLD POTTERY BOTTLE** MING  
 In a brown crackle, with a brass dragon stopper.
- 321 **WHITE PORCELAIN BOTTLE**  
 Covered over with heavenly dogs playing about spheres. Pink coral carved stopper.
- 322 **TURQUOISE MATRIX SNUFF BOTTLE**  
 With all-over design of fruits and leaves; a squirrel-like animal surmounts the stopper, which is also of turquoise.
- 323 **CLOUDY AGATE SNUFF BOTTLE** CHAR CHING  
 Of several colors, no ornamentation. Turquoise and coral-colored stopper. An unusual piece.
- 324 **OLD STONE SNUFF BOTTLE** CHIEN LUNG  
 In various colors, with heads simulating handles carved on the shoulders. Blue, red and white stopper.
- 325 **UNUSUAL WHITE JADE BOTTLE** CHIEN LUNG  
 Very thin and light, with a delicate floral tracery over the sides. Green and purple stopper.
- 326 **WHITE PORCELAIN SNUFF BOTTLE**  
 Of unusual shape, with dragon medallions on the sides, and heads like handles on the shoulders. Pink and white stopper.



LITTLE OLD ENAMELLED VASE

[NUMBER 383]



- 327 **RECTILINEAR JADE SNUFF BOTTLE** CHIEN LUNG  
 With a brown color, carved in the design of a forest scene on one side. The rest of the bottle is of a cloudy hue. Coral-colored stopper.
- 328 **THREE GLASS SNUFF BOTTLES**  
 In white and amber color. Two of the bottles show scenes in the design, and one a dragon. On one bottle an old sage and a coolie are crossing a bridge, on another a small boy is carrying a basket of flowers.
- 329 **RUBY-COLOR GLASS SNUFF BOTTLE**  
 Round and flat, with a fluted side. Coral-colored stopper.
- 330 **GREEN JADE SNUFF BOTTLE** CHIEN LUNG  
 With cloudy and brown discolorations. Coral-colored stopper. A fine piece of color.
- 331 **CLOUDY AMBER SNUFF BOTTLE** CHIEN LUNG  
 Without ornamentation except for the silver stopper, which is studded with turquoise and coral beads.
- 332 **CLEAR CRYSTAL SNUFF BOTTLE**  
 Rectilinear lines, no ornamentation. Purple stopper.
- 333 **WHITE JADE SNUFF BOTTLE** CHIEN LUNG  
 In the shape of a bunch of grapes, with a coral-colored stopper representing a small animal. Unusually well carved.
- 334 **SILVER SNUFF BOTTLE**  
 With a design of heavenly dogs around a sphere on each side; animal heads at the shoulders. Silver stopper.

335 SILVER SNUFF BOTTLE

With a design of heavenly dogs around the sphere on each side; animal heads at the shoulders. Silver stopper.

336 SILVER SNUFF BOTTLE

With little scenes chiseled on the sides. Gilded heads on the shoulders. Silver stopper.

337 TURQUOISE MATRIX SNUFF BOTTLE

In the shape of a child and a grapevine. The stopper is also of turquoise matrix, representing a small animal.

338 OLD AGATE SNUFF BOTTLE

Of a generally cloudy color, with black discolorations like a seaweed in muddy water. Pink stopper.

339 TURQUOISE MATRIX SNUFF BOTTLE

In the shape of a flattened jar with no carving. Coral and gilt stopper.

340 AGATE SNUFF BOTTLE IN TWO COLORS

The bottle generally is of a cloudy stone, the dragon crawling up its side is in brown. Bats and clouds fly over the sides. Turquoise-colored stopper.

341 PORCELAIN SNUFF BOTTLE CHIEN LUNG

In shape of a flattened jar, with little scenes painted on the sides. Flat porcelain stopper.

342 PORCELAIN SNUFF BOTTLE CHIEN LUNG

Showing many disciples among the clouds in relief over the surface. The neck of the bottle has been repaired and repainted. Green stopper.

- 343 PORCELAIN SNUFF BOTTLE CHIEN LUNG  
 With many little children painted over the sides. Of a flat sphere shape. Green stopper.
- 344 PAIR OF PORCELAIN SNUFF BOTTLES CHIEN LUNG  
 With many disciples in relief floating among the clouds of the heavens. Red stoppers.
- 345 PORCELAIN SNUFF BOTTLE CHIEN LUNG  
 With a little scene on one side and Chinese characters on the other. Of a flat jar shape. Coral stopper.

[See Illustration]

## NECKLACES AND CHAINS

- 346 CLEAR AMBER CHAIN  
 With a pendant of cloudy amber attached by a string of seed pearls and a coral bead. The pendant is carved in the shape of leaves and flowers.
- 347 TURQUOISE CHAIN  
 With white jade pendant suspended by a string of seed pearls and a carved coral bead.
- 348 LONG AMBER CHAIN  
 Of clear beads with a green jade pendant, beautifully carved in the shape of gourds and leaves. Seed pearls and a carved coral bead bind the pendant to the chain.
- 349 DARK AMBER CHAIN  
 With white jade pendant in the shape of a foliate dragon, attached to the chain by a string of seed pearls and a carved coral bead.

- 350 WHITE JADE CHAIN CHIEN LUNG  
With a white jade pendant beautifully carved and attached to the chain by a string of seed pearls and a coral bead.
- 351 CLOUDY AMBER CHAIN  
With cloudy amber pendant, representing fruits and leaves, attached by a string of seed pearls and a green jade bead.
- 352 CARVED CORAL NECKLACE  
With carved coral pendant, attached by a string of seed pearls and a small green bead. The carving of each bead simulates a coiling dragon. Pendant is in a floral design.  
[See *Frontispiece*]
- 353 DARK CLOUDY AMBER CHAIN  
Of fine large beads, without pendant.
- 354 TURQUOISE MATRIX CHAIN  
With white jade pendant containing the happiness character, attached to the chain by a string of seed pearls and a pink coral bead.
- 355 CLOUDY AMBER NECKLACE  
With cloudy amber pendant in the shape of a fish, attached to the chain by a green bead and seed pearls.
- 356 AMETHYST CHAIN  
Of heavy beads, with white jade drop in the shape of a gourd and leaves, very delicately chiseled.
- 357 CLOUDY AMBER CHAIN  
White jade pendant showing dragons coiling about a shield on which little scenes appear. The pendant is attached to the chain by a string of seed pearls and a carved coral bead.



358 RICH AMBER CHAIN

With cloudy amber pendant in a wave or cloud design, attached to the chain by a string of seed pearls and a carved coral bead.

359 LONG AMETHYST CHAIN

Without pendant. Large beads of irregular color.

360 FINE MANDARIN OFFICIAL'S CHAIN

In green jade, with carved coral studs, and pendants of pink crystal and green jade, with kingfisher feather attachments.

[See Illustration]

## CARVED JADE AND OTHER STONES

361 IMAGE OF A SAGE IN WHITE JADE CHIEN LUNG

A little bent old man stroking his beard as he strides along in flowing robes with a huge spray of lotus blossoms on his back. A nice piece of carving in the manner of Chinese stone cutting, the inspiration being obtained from the natural shape of the stone. Height, with stand, 7 inches.

362 SACRIFICIAL CUP

Carved in cloudy agate with handles in the shape of dragons. On a tall blackwood stand.

Height, with stand, 4 inches.

363 SACRIFICIAL CUP AND SAUCER

In cloudy agate, handles carved in the shape of dragons. Oblong saucer. Height, with stand,  $4\frac{1}{2}$  inches.

364 SACRIFICIAL CUP IN CLOUD-COLOR AGATE

A broad bowl-like cup with heavy dragons at the sides for handles. Thinly chiselled and of fine lines.

Height, with stand,  $3\frac{1}{2}$  inches.

365 SACRIFICIAL CUP

In cloudy agate of beautiful color and design. Dragons carved at the sides form the handles.

Height, with stand, 4 inches.

366 SACRIFICIAL CUP

In cloud-color agate with a slight smokey hue toward the base. Dragons carved at the sides form the handles. Fine lines and thin chiselling.

Height, with stand, 4 inches.

367 SACRIFICIAL CUP

In cloud-color agate with a touch of black at one side of the rim. Handles carved in shape of dragons.

Height, with stand, 4 inches.

368 BEAUTIFUL CARVED AGATE BOWL IN CLOUDY  
COLOR CHIEN LUNG

With a dragon crawling upon each side, the tails of which coil to form the base of the bowl.

Height, with stand, 4½ inches.

369 DELICATELY CARVED AGATE BOWL CHIEN LUNG

In two colors. The bowl and much of the grapevine that surrounds it are in cloudy agate, while the leaves are tinged with amber color as of autumn fading.

Height, with stand, 5 inches.

369a TWO-COLOR AGATE BOWL CHIEN LUNG

In the shape of an irregularly folded leaf. Most of the bowl is in a cloudy color but the leaves of the beautifully chiselled grapevine are tinged with amber color as if of autumn hues. Mounted on a green wooden stand.

Height, with stand, 5 inches.

370 CARVED GLASS BOTTLE IN TWO COLORS

CHIEN LUNG

The design being of ruby tone imposed upon a white base. An elaborate scene is depicted showing boats and mountains, bridges and lake, temples and pagodas. Heavy chiselling in relief. Height, with stand, 12½ inches.

371 OLD JADE BEAKER MING

With archaic decorations chiselled around the vessel. A handle of rectilinear lines terminating in a suggestion of dragon heads. Mounted on a stand which is lacquered in gold and black. Height, with stand, 6 inches.

372 OLD JADE SHRINE CHIEN LUNG

The face of the stone being of a cloudy color, the back of a brownish hue. A Buddha sits cross-legged within a cave, before him a burning censer, over him a tree. An inscription in Chinese characters is almost obliterated from the face of the stone, which is a miniature example of the cave temples found in various sections of China.

Height, with stand, 9 inches.

373 ANCIENT JADE CYLINDER HAN

Believed to have been excavated. Of strange and beautiful colors, dominately brown and green. Of the shape of a cart axle. Height with stand, 5½ inches.

374 LION GROUP IN CARVED AMETHYST CHIEN LUNG

A fine piece of chiselling representing a lion, lioness and cub in realistic proportions, though the exact curling of the mane and tail are in usual conventional Chinese manner. Mounted on a high stand of wood and silk.

Height, with stand, 12 inches.

375 CARVED GLASS BOTTLE IN TWO COLORS

CHAR CHING

The design being of ruby tone imposed upon a white base. An elaborate scene is depicted, showing boats and mountains, bridges, lake, trees, temples, and pagodas, with sages in ancient costume followed by small boys. Heavy chiseling in relief. Height, with stand, 11½ inches.

375a CARVED GLASS BOTTLE IN TWO COLORS

Mate to foregoing. Height, with stand, 11½ inches.

376 CARVED WOODEN FIGURE OF AN OLD MAN

Representing one of the traditional sages or disciples. With haggard features and bare chest; robed in a rough coat and carrying a tall staff, from which an old shoe is hanging. The figure is standing on a rough wooden branch. Height, with stand, 18 inches.

377 BRONZE LACQUER FIGURE MING

Of a Sage or Diety in the posture indicating teaching, sitting cross-legged with palms upturned. Long drooping mustache and cue of natural hair. The lines of the figure indicate Indian influence and the features of the face also differ considerably from the Chinese. One arm broken and repaired. Height, with stand, 12½ inches.

378 GRACEFUL FIGURE OF A LADY CHAR CHING

Carved in coral. A tall slim figure entirely enshrouded in a loose robe, carrying a basket of flowers on her back. High knot of hair, with flowers stuck into it. Slightly smiling expression. Height, with stand, 6 inches.

[See Illustration]



TALL ENAMELLED TEA POT

[NUMBER 384]



379 CARVED IVORY FIGURE OF A LADY CHIEN LUNG

In the act of drawing a sword. Her costume is an ancient one with a sashed coat over a tasseled flowing skirt. The dress is entirely covered with a design of lotus flowers simulating the customary embroidery. The hair, which is rolled into a high knot, is painted black, and flowers in colors are set upon it; the lips and eyes are colored, and slight touches of green, most of which has worn away, appear over the costume. Height, with stand, 14 inches.

[See Illustration]

380 CARVED IVORY FIGURE OF A LADY KANG HSI

Carrying a lotus spray over one shoulder and a basket of lotus in the other hand. Long and loose flowing drapery, with trailing sashes. A floral design traced over the entire costume, hair and eyes painted black, and flowers, originally in color which has now largely worn away. Mounted on an ivory stand, imitating waves, indicating that the lady is meant to be a deified person. Height, with stand, 9 inches.

381 CARVED RHINOCEROS HORN BEAKER MING

Of exquisite design and chiselling, showing many dragons entwined upon the handle and at the sides. The bowl is made in the conventional shape of a lotus bud. Of fine rich color. Height, with stand, 4½ inches.

382 PAIR OF FOO LIONS EARLY CHING

In hard stone, probably marble, the heavy creatures carved in conventional fabulous design, squat upon high marble pedestals, over which a symbolical cloth is chiselled. These creatures sit before the Yamens or residences of Chinese officials, indicating power or authority. The nose of one of the pair has been injured and repaired with cement.

Height, 3 feet 3 inches.

## PORCELAINS AND ENAMELS

383 SMALL ENAMELLED VASE CHIEN LUNG

A little mountain scene with a lake and village at its base in pale colors. The vessel is proportionately tall and cylindrical. Height, with stand, 6 inches.

[*See Illustration*]

384 TALL ENAMELLED TEAPOT CHAR CHING

In pale colors. With tall slender spout and handle. Design on a yellow field in pink and green. Shields at each side show a dragon in blue on a pink base.

Height, with stand, 12 inches.

[*See Illustration*]

385 BEAUTIFUL ENAMELLED TEAPOT CHIEN LUNG

Off nice lines and delicate colors, showing a scene with many Sages on the body of the vessel, which is of melon shape. Height, with stand, 9 inches.

[*See Illustration*]

386 PEACH-RED BOTTLE CHIEN LUNG

A handsome porcelain vase with a glaze of even tone. Beautiful shape. Height, with stand, 14 inches.

387 SET OF THREE WINE CUPS AND SAUCERS IN ENAMEL YUNG CHUNG

All showing the same design of little figures in rural scenes. Delicate colors. One of the cups is impaired by the cracking of the enamel.



- 388 **LARGE ENAMEL SWEETMEAT BOWL** CHIEN LUNG  
 Containing nine little dishes fitting into a circle, each with a different little scene portraying some mythical or historical fable. The bowl itself is decorated in Imperial yellow and other colors showing the phœnix, the emblem of the Empress, on the cover, surrounded by lotus sprays, the symbol of Buddhism. From a small section of the cover the enamel has been injured and broken away.  
 Diameter, 15 inches; height, with stand, 9½ inches.
- 389 **DECORATED SWEETMEAT BOWL**  
 In carved stone and enamel upon gilded metal, showing little panels of blue on a base of lotus scrolls. Set into the top is a slab of marble with the design of flowers and branches in carved jade and agate. The sweetmeat bowl was the formal New Year's present sent from house to house among wealthy people. Diameter, 12½ inches.
- 390 **DECORATED SWEETMEAT BOWL**  
 Mate to foregoing. Diameter, 12½ inches.
- 391 **FINE MINIATURE VASE** CHAR CHING  
 In old porcelain. A cloud design over the entire surface in pink, a dragon in gold painted on the body, and one in porcelain, also painted in gold, coiling around the neck. Beautiful lines and execution.  
 Height, with stand, 3½ inches.
- 392 **PAIR OF BRONZE-COLOR PORCELAIN BOWLS**  
KANG HSI  
 Undecorated. Color in imitation of metal.  
 Height, with stand, 3 inches.
- 393 **SANG DE BOEUF BEAKER** YUNG CHUNG  
 A tall vessel in flame-color with touches of blue. A portion of the rim was broken in transportation to this country but has been repaired. Height, 14½ inches.

- 394 BLANC DE CHINE PORCELAIN CUP MING  
 Of an ivory tone, with a deer, dragon heads and flower branches protruding from a suggestion of rocks.  
 Height, with stand,  $4\frac{1}{2}$  inches.
- 395 PAIR OF YELLOW AND GREEN SAUCERS  
 KANG HSI  
 With a dragon in one dish with lotus blossoms and Buddhist emblems in green set upon yellow ground. In the other dish is the symbol of the Empress, the phoenix, likewise with lotus and Buddhist emblems. The rims of the saucers are scalloped.  
 Diameter, 5 inches.
- 396 PEA GREEN FAMILLE ROSE VASE CHIEN LUNG  
 With panel scenes on either side, one representing a lady and children in a country garden, the other a mountain, lake and temple. Over the green field a delicate fern-like design is traced.  
 Height, with stand, 18 inches.
- 397 HEAVY PLATE IN CHUAN YAO POTTERY YUAN  
 With a beautiful sky-blue glaze, crackled over the entire surface, with a plated rim of metal.  
 Diameter,  $8\frac{1}{2}$  inches.
- 398 POTTERY GODDESS OF MERCY EARLY MING  
 In three colors. The figure is seated upon a rockery with a child upon her knee. The robes and head dress are glazed in green, aubergine and yellow. The bare portions of the figure, face, hands and feet, were originally painted or glazed in a color that has chipped away.  
 Height, with stand, 17 inches.
- 399 OLD GLAZED POTTERY GARDEN STOOL  
 In cream white, with floral fretwork panels in two sides, dragon heads handles on the others. Fine glaze.  
 Height, 17 inches.



OLD ENAMELLED TEA POT

[NUMBER 385]



- 400 OLD GLAZED POTTERY GARDEN STOOL  
 Mate to foregoing. Height, 17 inches.
- 401 BARREL SHAPED GLAZED POTTERY GARDEN  
 STOOL  
 With ring handles at the sides. In cream colored glaze.  
 Height, 16 inches.
- 402 BARREL SHAPED GLAZED POTTERY GARDEN  
 STOOL  
 Mate to foregoing. Height, 16 inches.

## EMBROIDERIES AND BROCADES

- 403 RED AND GOLD HANGING  
 With dragons floating among the clouds, above the Waves of Eternity, and symbols of Buddhism. Embroidered in heavy gold thread and bordered by a band of green, on which the bat is embroidered in pink and the double happiness character in gold thread.  
 Size, 54 inches x 74 inches.
- 404 UPRIGHT HANGING IN RED AND GOLD  
 The designs embroidered in panels, showing bowls of fruits and vases of flowers. A broad border band of gold embroidery.  
 Size, 19 inches x 64 inches.
- 405 UPRIGHT HANGING IN RED AND GOLD  
 Mate to foregoing. Size, 19 inches x 64 inches.

406 SQUARE HANGING IN GOLD AND RED

Geometric designs and floral devices embroidered around a bowl of fruit including the Buddha's fingers, pomegranate, and the peach, each of which are symbolical. A vase of flowers beside the fruit. The indications are that this was a wedding present or decoration for a nuptial ceremony.

Size, 39 inches x 33 inches.

407 SQUARE HANGING IN GOLD AND RED

Mate to foregoing.

Size, 39 inches x 33 inches.

408 HANGING IN GREEN AND GOLD

With dragons floating among the clouds above the Waves of Eternity, numerous Buddhist symbols and bats and the double happiness character for good fortune. The border band is likewise of green. An upper border panel of deep blue brocade with dragons in gold.

Size, 54 inches x 67 inches.

409 OLD FLOWER BASKET HANGING

Conventional Chinese panel pictures. The upper panel shows a basket embroidered in gold thread, the lower in colors in the fine Pekin stitch; on a field of deep blue silk framed by pale blue silk.

Size, 9 inches x 30 inches.

410 OLD FLOWER BASKET HANGING

Mate to foregoing.

Size, 9 inches x 30 inches.

411 OLD FLOWER BASKET HANGING

Mate to foregoing.

Size, 9 inches x 30 inches.

412 OLD FLOWER BASKET HANGING

Mate to foregoing.

Size, 9 inches x 30 inches.

413 UPRIGHT PANEL PICTURE

On a tan field a mountain scene is embroidered in various colors of a single tone, showing mountain lakes and bridges and little cottages with here and there a human figure.

Size, 30 inches x 82 inches.

414 UPRIGHT PANEL PICTURE

Mate to foregoing.

Size, 30 inches x 82 inches.

415 EMBROIDERED PANEL PICTURE

On deep blue silk, showing a mountain scene and bridges and boats upon a little lake embroidered in tan and brown tones.

Size, 31 inches x 80 inches.

416 EMBROIDERED PANEL PICTURE

Mate to foregoing.

Size, 31 inches x 80 inches.

## CARVED AND LACQUERED FURNITURE

417 SMALL CABINET IN HARD WOOD

The body being of black wood, with panels inset in a curiously mottled grain of oak color. Drawers lined to simulate Chinese books.

Height, 23 inches; width, 15 inches.

418 SMALL CABINET IN HARD WOOD

Mate to foregoing. Height, 23 inches; width, 15 inches.

419 SMALL HARD WOOD CABINET

With designs of antique pots and jars on the panelled doors. Brass trimmings. Height, 21 inches; width, 12 inches.

- 420 LOW HARD WOOD STOOL  
Of square shape with carving of beaded geometric lines.  
Height, 16 inches; width, 13 inches.
- 421 BARREL SHAPED STOOL IN HARD WOOD  
Standing upon five legs bound together by a base rim. Delicate carving of floral design, with here and there the suggestion of dragon heads. Height, 19 inches.
- 422 BARREL SHAPED STOOL IN HARD WOOD  
Mate to foregoing. Height, 19 inches.
- 423 SMALL DOMESTIC GODDESS SHRINE  
With screen at the back, and fretwork design showing birds and flowers and dragon heads. Three drawers similarly ornamented. Height, 28 inches.
- 424 LONG HARD WOOD STOOL  
With rounded ends supported by fretwork carving in a lighter color. Length, 55 inches; width, 11 inches.
- 425 LONG TABLE IN HARD WOOD  
With fret work carving showing dragons and the *shou* character for good fortune.  
Height, 32 inches; length, 43 inches.
- 426 OBLONG LACQUERED TABLE  
Showing three little mountain scenes in panels on the surface, and floral scrolls and fretwork decoration on the sides. In black and gold. Length, 47 inches.



427 LARGE CHAIR OF PALACE DESIGN

With a little scene painted in panels on the seat and another in the back. Lacquered in black and gold. Floral scrolls and fretwork decorations complete the design.

Length, 40 inches; height, 36 inches.

428 TABLE SCREEN PICTURE CHIEN LUNG

One side lacquer and semi-precious stones, showing wild chrysanthemum sprays in white and green jade, the other depicting a mountain scene with a country palace carved in bamboo.

Height, 26 inches.

429 RARE LACQUERED WARDROBE MING

In black and gold, covered with a design of lotus flowers alternating with heavenly dogs in varying grotesque activity. On the back of the wardrobe a tree is lacquered with touches of pink in the gold and swallows flying about among the branches. The cabinet is lacquered within the shelves and upon the drawers. Large brass hinges and lock ornament.

Height, 5 feet 11 inches; width, 3 feet 4 inches.

430 RARE LACQUERED WARDROBE MING

Mate to foregoing.

Height, 5 feet 11 inches; width, 3 feet 4 inches.

431 OLD LACQUERED CURIO CABINET

In black and gold, with little scenes depicted at the back and floral sprays on the side panels.

Height, 35 inches; width, 31 inches.

432 OLD LACQUERED CURIO CABINET

Mate to foregoing. Height, 35 inches; width, 31 inches.

433 LACQUERED LANTERN HOLDER

In black and gold. A tall pole ending in a dragon's head sustained on a broad heavy base, lacquered with little panel scenes and floral and archaic devices. Lantern of horn with the *shou* character on the side. (Injured and repaired).

Height, 7 feet 4 inches.

434 LACQUERED LANTERN HOLDER

Mate to foregoing.

Height, 7 feet 4 inches.





THE METROPOLITAN  
MUSEUM OF ART

*Thomas J. Watson Library*

